

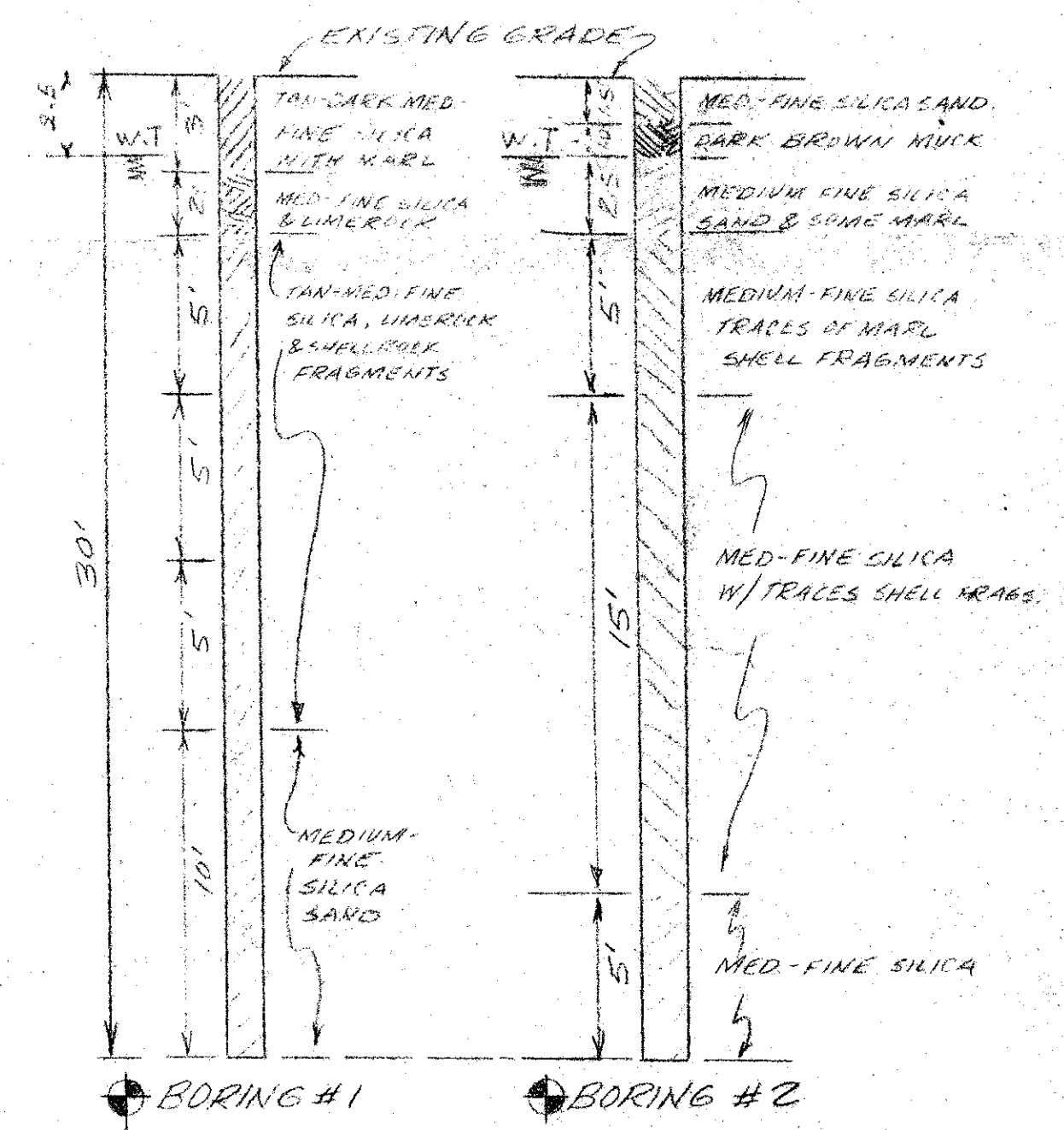
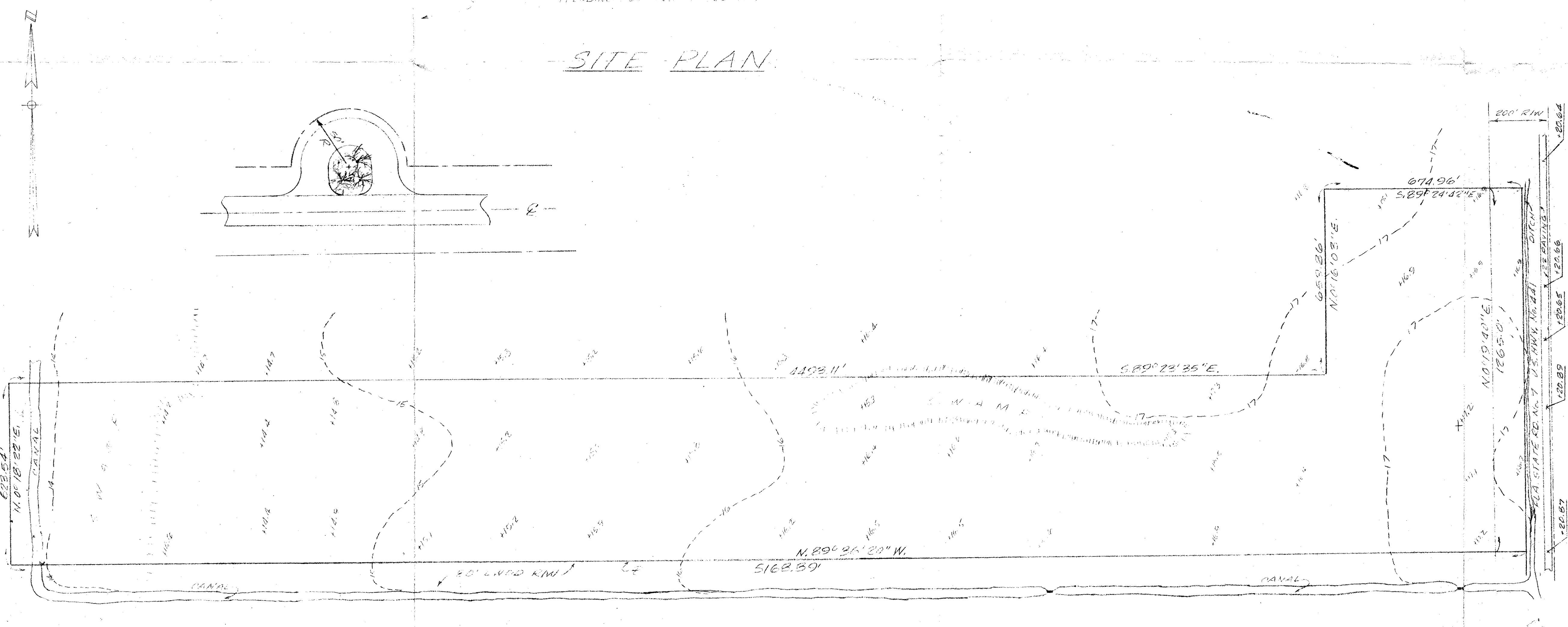
DESCRIPTION

TRACTS 43 & 50 TO 56 INCL. LESS ROAD R/W FOR SR. NO. 7, ALL IN BLOCK 67, PALM BEACH FARMS COMPANY PLAT NO. 3 AS RECORDED IN PLAT BOOK 2, PAGE 51, ALSO THAT 25 FOOT RIGHT-OF-WAY LYING SOUTH OF & CONTIGUOUS TO TRACTS 50 THROUGH 56, INCLUSIVE, LESS STATE ROAD NO. 7 R/W, ALSO THAT 25 FOOT R/W WEST OF & CONTIGUOUS TO TRACTS 22, 23, 25, 36, 49 AND 50.

TOTAL PROJECT AREA = 82.6 ACRES
 DWELLING UNITS = 20
 LOT SIZE = 2.5 ACRE MINIMUM
 RE ZONING
 DENSITY = 0.31
 FRONTAGE = 180'

BIG ROAD SUBDIVISION
 (PENDING PLATTING 11/15/77)

SITE PLAN



ur0177.igr
 TIERRA DELRAY SOUTH

GRAPHIC SCALE:
 0 100' 250' 500' 750' 1000'

3-15-78
 REVISED: 19 FEB. 1978 - GENERAL

TOPO & CONTOUR MAP
 NOTE: ELEVATIONS ARE M.O.S. MEAN SEA LEVEL DATUM.

DEVELOPER:
 JOHN A. ROCHMAN
 3000 N.E. 30th PLACE
 FT. LAUDERDALE, FLA. 33306
 TEL.: 563-7227

Malek & Associates
 Consulting Engineers, Land Planners, Land Surveyors
 Delray Beach, Florida 33444

SITE PLAN		SCALE	DRAWN BY
		1"=200'	REVISED
TIERRA DELRAY SOUTH			
DATE	APPROVED BY	DRAWING NUMBER	
JAN. 1978		7709	